

Product Name:	Silicone Penguin Nasal Aspirator
Materials:	Nasal Aspirator - Medical-Grade Silicone Tube Cleaning Brush - Nylon, Stainless Steel
Dimensions:	Nasal Aspirator - 35 x 34 x 96mm Tube Cleaning Brush - 8 x 8 x 99mm
Colour:	Clear
Contents:	1 x Nasal Aspirator Body 2 x Silicone Tips 1 x Tube Cleaning Brush
Recommended Age:	Arc Tip - 0-12 months Cone Tip - 12 months+

Product Description:

Haakaa's Silicone Penguin Nasal Aspirator is the quick, quiet, and efficient way to clear your little one's stuffy, runny nose! Our aspirator is made of soft, medical-grade silicone and sucks up mucus with a gentle squeeze, clearing your baby's airways and helping them breathe easier.

This aspirator comes complete with two tip sizes to choose from, making it ideal for all noses. Each tip features dual-valves to ensure there is no backflow, along with a unique design that keeps them attached securely to the aspirator body - and they're super easy to clean! Just detach the tip and use the included brush to scrub all those nooks and crannies, then sterilise. The transparent silicone is non-toxic and makes it easy to see how much mucus has been collected, and where it needs to be cleaned!

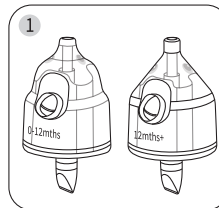
Features:

- Utilises the power of natural suction.
- Easy-squeeze, super-soft silicone is gentle on little noses.
- Dual-valve design prevents fluid from flowing back out of the tip.
- Two tip sizes to choose from – suitable for all ages.
- Two-piece design is easy to care for – simply disassemble to clean and boil to sterilise!
- Lightweight and portable.
- Transparent container body helps you to keep track of fluid output.
- Made of 100% medical-grade silicone.
- Tube Cleaning Brush reaches all areas of the aspirator for a complete clean.
- BPA, PVC and phthalate-free.

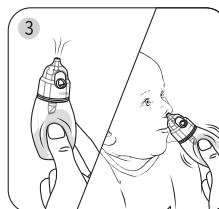
Cleaning and Care:

Disassemble and wash before and after each use. Always sterilise the aspirator after any illness. Although dishwasher safe, we recommend hand washing the aspirator in warm soapy water, then rinsing and drying thoroughly. To clean aspirator, use the cleaning brush included to scrub the tube and spout thoroughly with warm, soapy water and rinse well. To clean the airway of the silicone tip, use the brush included or any other small brush. You can also run clean, warm water directly into the airway to thoroughly flush it out. Hand wash Tube Cleaning Brush with warm soapy water or a gentle sponge and rinse thoroughly. To sterilise the aspirator, use a steam steriliser or boil in water for 2-3 minutes. Brush **NOT** suitable for microwaves, sterilisers or boiling water due to stainless steel components. Only soft bristle brushes or soft sponges should be used to clean this product. Hard scourers may scratch the surface. Allow to dry completely before storing. Store product in a cool, dry place and avoid direct sunlight.

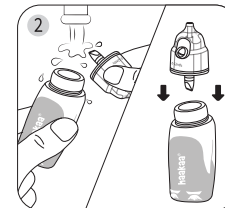
Instructions:



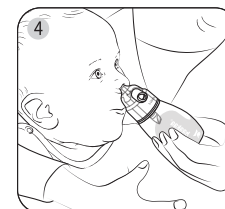
Choose the appropriate tip for your baby's nose. Only the very end of the tip needs to fit inside - it should be snug and comfortable.



Gently squeeze the bottom of the aspirator body to expel air, then place the tip inside your baby's nostril. Release your grip slowly to suction fluid.



Clean all parts before use. Attach tip to bulb body, ensuring it is securely in place with no gaps.



If more suctioning is required, hold the aspirator in place and squeeze it again to remove any remaining mucus. The valves prevent backflow, so removing between squeezes is not necessary.

PLEASE NOTE: This product is designed to suction up nasal fluid rather than solid material. Ensure silicone tip is firmly attached before each use. If mucus is dry or sticky, use a drop or two of saline or freshly expressed breastmilk to soften it (one nostril at a time).

Caution:

- ⊙ Check product condition regularly. Replace if product shows any signs of damage.
- ⊙ Do not store near any sharp objects.
- ⊙ This product is not a toy. Do not use this product for anything other than its intended use.
- ⊙ Adult supervision required. Keep out of reach of children and pets when not in use.
- ⊙ Do not force the tip far inside the nostril.
- ⊙ Due to stainless steel components, do not place Tube Cleaning Brush in microwaves, sterilisers or boiling water.
- ⊙ Squeezing the aspirator body from the top may cause tip to pop off - only squeeze from the bottom.