

Product Name: SqueezeDOSE Silicone Dispenser Set
Materials: Bulb, Tips - Medical-Grade Silicone
 Storage Case - PP
 Tube Cleaning Brush - Nylon, PP, Stainless Steel

Dimensions: 1 x Dropper Tip Body - 20 x 20 x 85mm
 1 x Nib Tip Body - 45 x 45 x 90mm
 1 x Bulb Base - 34 x 34 x 28mm
 1 x PP Storage Box - 163 x 60 x 55mm
 1 x Cleaning Brush - 135 x 21 x 6mm

Volume: Dropper Tip Body: 0.01 oz./0.4ml
 Nib Tip Body: 0.2 oz./5ml
 Bulb Base: 0.3 oz./8ml

Recommended Age: 0 month+

Standard: EN 14350

Product Description:

Feed your little one liquids and administer their medicine safely and easily with Haakaa's SqueezeDOSE Silicone Dispenser Set! The unique silicone bulb design is an excellent alternative to traditional hard plastic syringes. It allows you to use it one-handed, giving you effortless control over the flow rate with a simple squeeze. Designed for fuss-free measuring, filling, and feeding!

The 100% medical-grade silicone SqueezeDOSE has clear measurements that are easy to read no matter which way you're holding it, and the wide base gives added stability on flat surfaces. What's more, it disassembles with no trouble at all, making cleaning a breeze. To use, just squeeze the bulb to fill, then gently squeeze again to control the flow rate for uncomplicated and comfortable dispensing of liquids!

This set comes with two interchangeable syringe tips to suit your child's needs! The dropper tip releases liquid drop by drop, while the nib tip has a protective shield and dual-angled ports designed to safely administer liquids into your baby's cheeks, preventing choking.

Features:

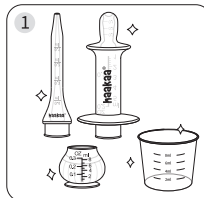
- Effortless one-handed operation – simply squeeze to fill and control flow rate.
- Precise measurement marks work both ways for accurate dosing.
- Two syringe tips to suit different needs.
- Nib tip features dual-angled ports send liquid into the cheeks to prevent choking and spitting up.
- Nib tip's soft shield ensures comfortable feeding without choking.
- Dropper tip dispenses small droplets easily.
- Wider base gives added stability on flat surfaces.
- Soft and safe 100% medical-grade silicone.
- Safe in dishwashers, sterilisers and boiling water – simply detach for cleaning.
- BPA, PVC and phthalate-free.

Cleaning and Care:

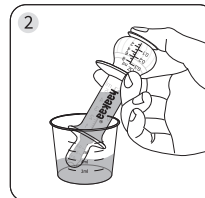
Before first use, disassemble and clean the product and then place the silicone components in boiling water for 5 minutes. This is to ensure hygiene. Wash before and after each use. Always sterilise after any illness. Although dishwasher safe, we recommend hand washing with the cleaning brush in warm soapy water, then rinsing and drying thoroughly. To sterilise the dispensers & storage box, use a steam steriliser or boil in water for 2-3 minutes. Brush **NOT** suitable for microwaves, sterilisers or boiling water due to stainless steel components. Do not use any bleach-based cleaners or tablets to clean or sterilise your Haakaa products. Silicone may absorb the colours of liquids it comes in contact with. To minimise discolouring, wash immediately after use. Store product in a cool, dry place and avoid direct sunlight.

PLEASE NOTE: Always follow your doctor's or the manufacturer's dosage recommendations. Check measured dosage at eye level on a flat surface.

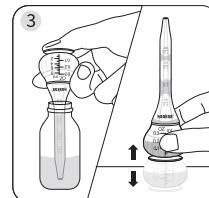
Instructions:



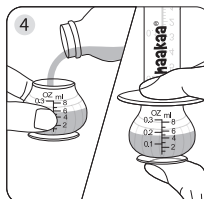
Sterilise before use. Select the tip that suits your needs. Use a clean container (not included) to prepare liquids if needed.



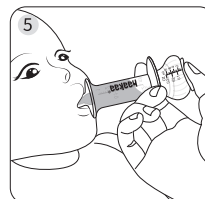
Method 1 - Nib Tip. Draw up liquid by squeezing and holding the bulb, submerging the tip and gently releasing bulb.



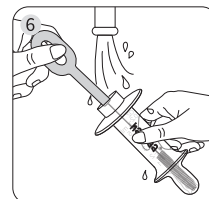
Method 2 - Dropper Tip. Draw up liquid by squeezing and holding the bulb, submerging the tip and gently releasing bulb. Tap the bulb to ensure the liquid drains from the tip, ensuring more accurate dosing.



Method 3: Carefully pour the pre-measured liquid directly into bulb body. Then snugly push the tip into the bulb, ensuring no gaps. Check the amount again.



Introduce the tip to the corner of your baby's mouth, and after they start to suck, slowly squeeze the bulb.



After feeding, disassemble the dispenser and wash thoroughly with the dedicated brush.

NOTE: Please be aware that squeezing firmly while using the dropper tip will cause liquid to stream out rather than in drops. In order for liquid to be released in drops, you must squeeze gently. We recommend testing the flow strength by squeezing on bulb portion prior to each use. To avoid bubbles forming in the bulb body, suction liquid up very slowly.

Caution:

For your child's safety and health

WARNING!

- ⊗ Continuous and prolonged sucking of fluids will cause tooth decay.
- ⊗ Always check liquid temperature before feeding.
- ⊗ Check product condition regularly. Throw away at the first sign of damage or weakness.
- ⊗ Keep components not in use out of the reach of children and pets.
- ⊗ To avoid the risk of strangulation, never attach to cords, ribbons, laces or loose parts of clothing.
- ⊗ Never use tips as a soother.
- ⊗ Always use this product with adult supervision.
- ⊗ Do not store near any sharp objects.
- ⊗ This product is not a toy. Do not use this product for anything other than its intended use.
- ⊗ Inspect tips before each use by pulling them in all directions to ensure no damage exists.
- ⊗ Do not leave this product in direct sunlight or heat, or leave in non-bleach-based sterilising solution for longer than recommended, as this may weaken the product.
- ⊗ Do not fill beyond top measurement mark.
- ⊗ Your silicone products may grow cloudy after repeated use, especially in hard water areas. This is normal and will not affect the performance of your product.