

Product Name: Hands-Free Pumping & Nursing Bra

Materials: 95% Nylon, 5% Spandex

Size: S/M/L/XL

Colours: Black/Beige

Product Description:

The Haakaa Hands-Free Pumping & Nursing Bra provides comfort, support and freedom to busy breastfeeding and pumping mamas.

It has an innovative, layered crossover slit design that creates a better seal for your pump flange, while the detachable outer layer allows you to conveniently breastfeed your little one without needing to remove your bra.

Best of all - not only it is functional, but this bra is also incredibly comfortable! Made with a beautifully soft nylon-spandex blend, it stretches to accommodate different shapes and sizes while also being incredibly gentle on your skin and sensitive nipples.

Features:

- Innovative, layered crossover slit design creates a better seal for your pump flange.
- Detachable outer layer & quick-clip clasp allow you to breastfeed without removing your bra.
- Wire-free, super soft and comfortable to wear.
- Adjustable straps for a comfortable, personalised fit.
- Made from 95% nylon and 5% spandex for stretch and comfort.

Cleaning and Care:

- Wash before wearing.
- To prevent twisting and tangling, close all hooks and clasps before washing.
- Although machine washable, to help your bra last longer we recommend hand washing in cold water. If using a washing machine, place your bra in a lingerie bag, then choose the delicate cycle + cold wash.
- Do not use any bleach-based agents to clean your bra.
- Wash with like colours to avoid colour transference.
- Do not dry clean.
- To dry, hang with the cups reshaped and the back hooked up.
- Do not iron your bra.

Caution:

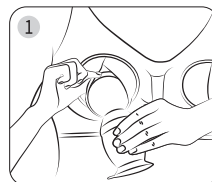
- Check product condition regularly. Replace if this product shows any signs of damage.
- Do not use this product for anything other than its intended use.
- Keep out of reach of children and pets when not in use.

Customer Service:

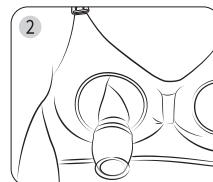
For further assistance, please contact customerservice@haakaa.co.nz

Instructions:

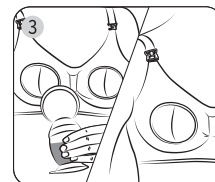
Pumping:



Insert the pump flange through the slits on the outside of the bra.

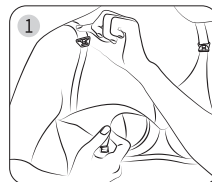


Attach the pump to your breast.

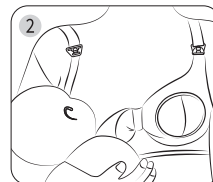


Detach the pump once full and pull the flange back through the slits of the bra.

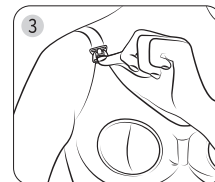
Breastfeeding:



Unhook the clasp from the bra strap and pull down the outer layer to reveal the nipple.



Breastfeed your baby.



After feeding, pull up the outer layer and hook the clasp back onto the bra strap.

BRA SIZING GUIDE

Size	S	M	L	XL
NZ&AU	10A/10B/10C/10D 10DD/12A/12B	12C/12D/12DD/14A 14B/14C/14D	14DD/16A/16B/16C 16D/16DD/18A	18B/18C/18D/18DD 20A/20B/20C
USA	32A/32B/32C/32D 32E/34A/34B	34C/34D/34E/36A 36B/36C/36D	36E/38A/38B/38C 38D/38E/40A	40B/40C/40D/40E 42A/42B/42C
EU	70A/70B/70C/70D 70E/75A/75B	75C/75D/75E/80A 80B/80C/80D	80E/85A/85B/85C 85D/85E/90A	90B/90C/90D/90E 95A/95B/95C