

SILICONE FEEDING TUBE SET

Product Manual

Product Name: Silicone Feeding Tube Set

Materials: Silicone Feeding Tube - Food-Grade Silicone, Polyoxymethylene
Silicone Tube Holder - Food-Grade Silicone
Medical Tape - Nonwoven Fabric
Feeding Tube Storage Box - PP
Cleaning Brush - Nylon, Stainless Steel

Contents: 1 × Inlet Tube 1 × Outlet Tube 1 × Tube Adaptor 1 × Flow Controller
1 × Silicone Tube Holder 1 × Medical Tape 1 × PP Storage Box 1 × Cleaning Brush

Product Description:

Many mums and their babies experience feeding issues, including latching problems, low milk supply, or little ones needing extra nourishment or help learning how to feed. The Silicone Feeding Tube helps you overcome some of these issues by delivering a constant and controllable flow of milk to your baby at the breast.

Our feeding tube connects to a compatible baby bottle filled with supplemental milk - we recommend our Haakaa Gen. 3 Silicone Baby Bottle with the variable flow anti-colic nipple. However, other baby bottles with cross-cut teats may also be compatible (see caution). The tubing is then taped next to your nipple, allowing your baby to feed directly at the breast - receiving the nutrition they need while stimulating your supply at the same time.

The milk flow rate is easy to customise to suit your baby - simply use the Flow Controller to adjust. If you're using the Haakaa Gen. 3 Silicone Baby Bottle, you can also control milk flow with a gentle squeeze, or else sit your compatible bottle at a level above breast height so that gravity can do the work for you!

Features:

- Allows babies requiring extra nourishment to receive supplemental feeds.
- Start the flow with a simple squeeze of your Gen. 3 Silicone Bottle (or compatible bottle).
- Stimulates your milk supply as baby sucks at the breast.
- Flow controller allows you to adjust the flow rate.
- Soft silicone tube is gentle on baby's mouth.
- Made with food-grade silicone.
- BPA, PVC and phthalate-free.

Cleaning and Care:

Before first use, disassemble and clean the product before placing silicone components in boiling water for 5 minutes to sterilise. Wash before and after each subsequent use. To clean the tubing, fill a bottle with warm soapy water and connect the feeding tube as normal. Squeeze bottle to let it flow through the tubing. Use the included cleaning brush to scrub the inside of the wider parts of the tubing. To clean the thinner sections of the tubing, squeeze the bottle several times to flush through with warm soapy water. Squeeze and roll tube between your fingers to ensure thorough cleaning. To rinse the tubing, flush several times again with clean, fresh water. Repeat as needed until clean. To sterilise the tubes, tube adaptor & tube holder, use a steam steriliser or boil in water for 2-3 minutes. **AVOID** placing the flow controller in boiling water or sterilisers. Brush **NOT** suitable for microwaves, sterilisers or boiling water due to stainless steel components. Do not use any bleach-based agents or sterilising tablets to clean this product. Do not use a UV steriliser to clean this product as it may impact its lifespan. Clean tubing as soon as possible after feeding to prevent milk drying inside.

Caution:

For your child's safety and health

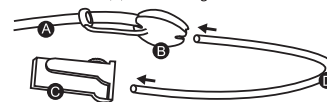
WARNING!

- Continuous and prolonged sucking of fluids will cause tooth decay.
- For your child's safety, never attach product to cords, ribbons, laces or loose parts of clothing, as it can become wrapped around their neck.
- Always check liquid temperature before feeding.
- Keep components not in use out of the reach of children.
- Check product condition before each use. Immediately discontinue use and replace if this product shows any signs of damage.
- Do not store near any sharp objects.
- We recommend using this product with the Haakaa Gen. 3 Silicone Bottle with cross-cut teat.
- Take care when inserting the tube into the Gen. 3 cross-cut nipple to avoid tearing.
- It is possible that other cross-cut teats may be compatible with this product. Please take caution when using these.
- Only soft bristle brushes or soft sponges should be used to clean this product, as hard scourers may scratch the surface.
- Exposure to detergent may make the silicone in this product appear cloudy - this is a normal reaction and does not affect the function or safety of the product.
- This product is not a toy. Do not use this product for anything other than its intended use.
- Store product in a cool, dry place and avoid direct sunlight.
- Adult supervision is required.

Assembly:



1. Insert inlet tube (A) into the larger hole of tube adaptor (B).

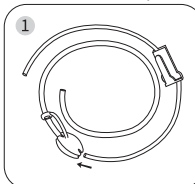


2. Insert one end of outlet tube (D) into the smaller hole of tube adaptor (B) and the other into flow controller (C).

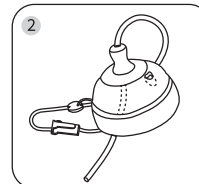
NOTE: Try wetting the ends of the tubes with cooled, boiled water for easier insertion.

Instructions:

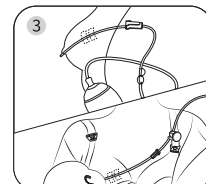
As outlined in assembly directions:



Insert outlet tube (D) and inlet tube (A) into both ends of tube adaptor (B) and flow controller (C).



Pass the other end of inlet tube (A) down through the X-shaped opening on the Variable Flow Nipple.



Place end of outlet tube (D) 1-2cm away from your nipple. Secure using medical tape and tube holder.

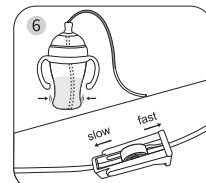


Introduce your baby to your nipple and place the end of outlet tube (D) gently into their mouth to begin feeding.



To start milk flow, gently squeeze your Gen. 3 Silicone Bottle*. Flow rate may be increased by placing bottle higher than your nipple.

*If using third party bottles, ensure they can be squeezed or milk may not flow.



To adjust the milk flow to suit your baby, increase pressure on the bottle to speed up or decrease to slow down. Alternatively, use the flow controller (C) to manage milk flow.

PLEASE NOTE: This product should only be used in consultation with a Lactation Consultant or other maternity care professional. To avoid risk of choking, ensure tube is well secured with provided medical tape to prevent baby dislodging it.